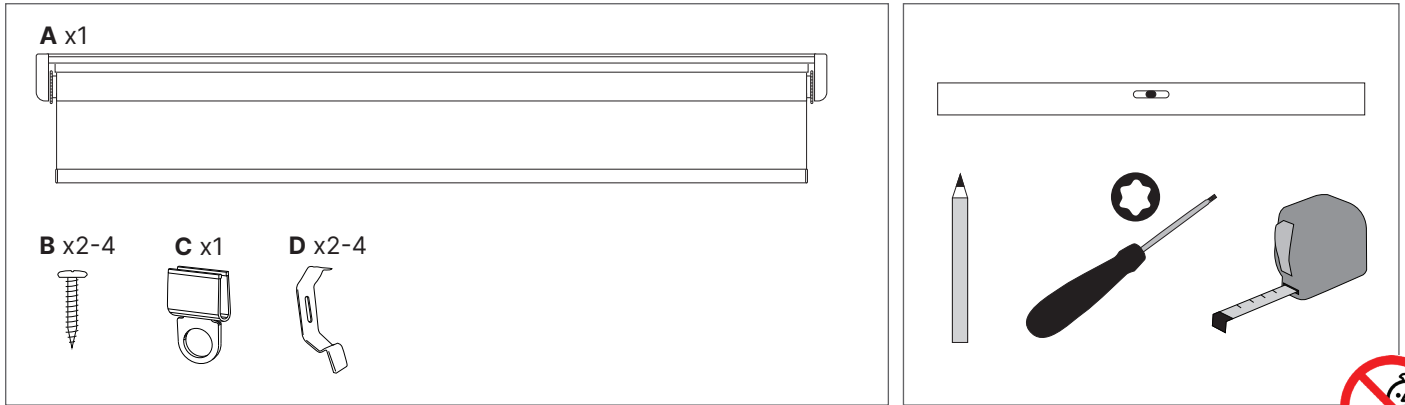
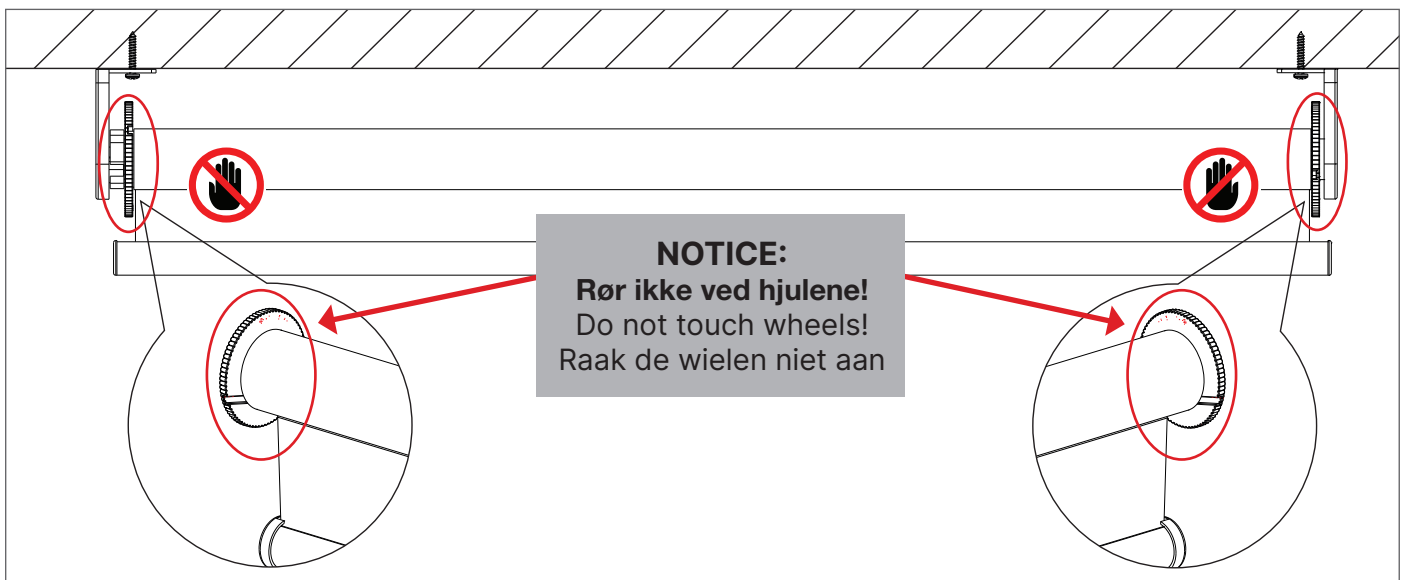
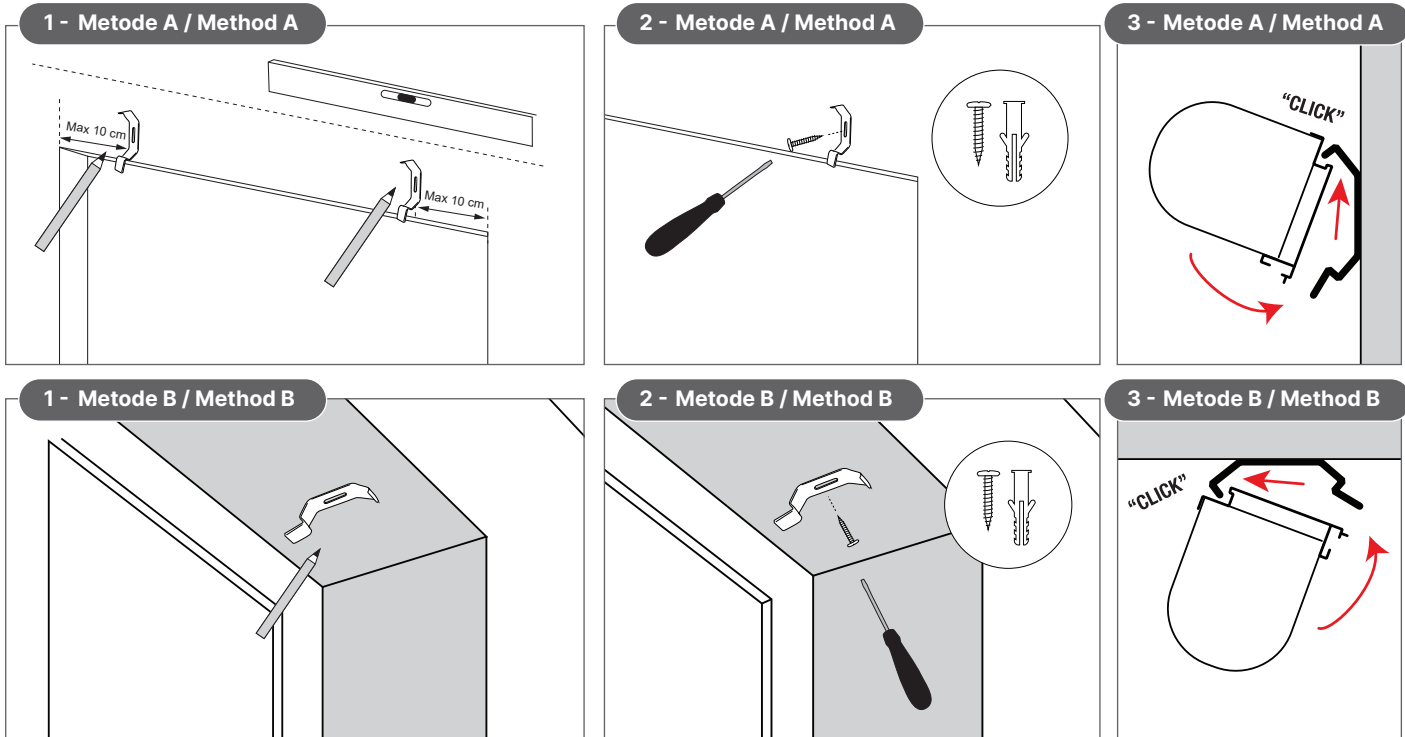


03.2026 - ver.1



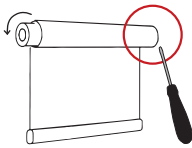
VÆLG MONTERINGSMETODE (A ELLER B)

CHOOSE MOUNTING METHOD (A OR B) / KIES MONTAGEMETHODE (A OF B)

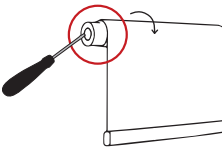


03.2026 - ver.1

!

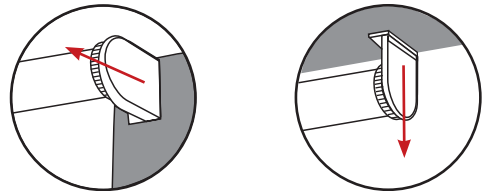


DK Standard rul → justér i **højre** side
EN Standard roll → adjust **right** side
NL Standaard rol → aanpassen aan **rechterkant**



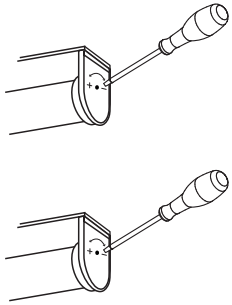
DK Overrul → justér i **venstre** side
EN Reversed roll → adjust **left** side
NL Overrol → aanpassen aan **linkerkant**

1



DK Tag endedækslet af
EN Remove end cap
NL Verwijder het eindkapje

2



DK Sænk hastighed (brems)
EN Slow down (brake)
NL Verlaag snelheid (rem)

DK Øg hastighed (slæk bremse)
EN Speed up (release brake)
NL Verhoog snelheid (rem lostaten)

! **BEMÆRK; GARDINET KAN IKKE AFKORTES**

PLEASE NOTICE; THIS ROLLER BLIND CANNOT BE SHORTENED
LET OP: DIT ROLGORDIJD KAN NIET WORDEN INGEKORT

